

August 28, 2025

We are excited to welcome students back to school on Tuesday, September 2 and want to share information about the Nanton schools bussing and traffic flow. Livingstone Range School Division is working with the Town of Nanton to ensure safety and efficiency for our schools and the community.

Staff will be outside before and after school to help students and parents learn and remember these new bus lanes, drop-off areas, and no parking zones. Thank you for your cooperation to ensure students can arrive and depart school safely.

### **Bussing**

- The 24 Avenue southbound lane next to the sidewalk is a bus zone only. No stopping, student drop-off, or parking is permitted.

### **Parent parking and student drop-off**

- The south side of 22 Street is the designated parent parking and student drop-off location. If you must park on the north side of 22 Street please be courteous to neighbours and do not block driveways.



### **Staff and high school student parking**

- Parking continues to be available in the lot along 24 Avenue.

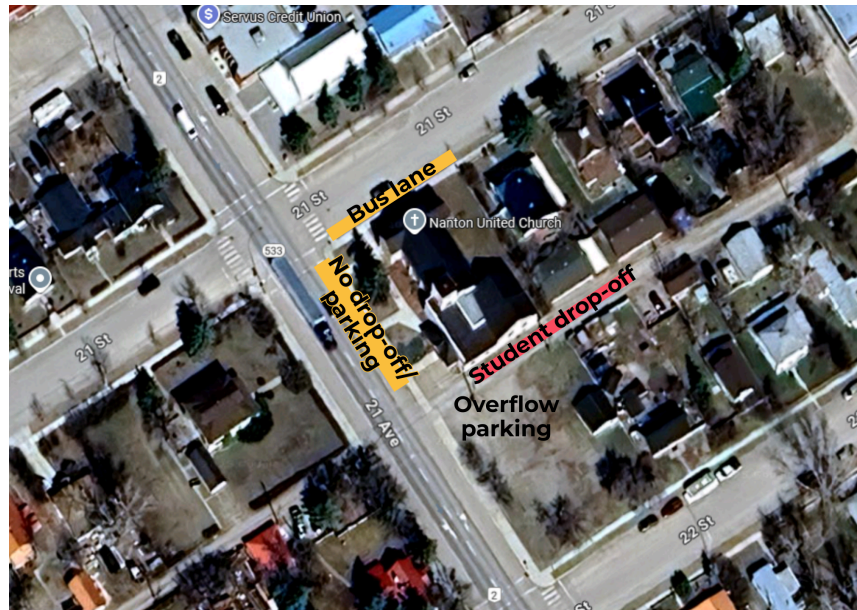
### **Off-campus sites**

- Students will be bussed to and from off-campus sites such as the Bomber Command Museum (for J.T. Foster band) and the Tom Hornecker Recreation Centre (for alternative phys ed programming).

**Every student, every day.**

## United Church

- Grade 5/6 students will be bussed from J.T. Foster to the Nanton United Church in the morning and back to J.T. Foster again at the end of the school day.
- The south side of 21 Street in front of the church is a bus zone only. No stopping, student drop-off, or parking is permitted.
- The east side of 21 Avenue in front of the Church is a no drop-off or parking zone.
- Parents may drop off students in the alley way and overflow parking, if necessary, is available in the lot to the south of the church.



A note about playground removal and installation. A.B. Daley playground removal scheduled for the summer was delayed due to contractor availability. We are working with the construction contractor to move the playground equipment as soon as possible, and we will keep you informed. We understand that this may be frustrating for families. The A.B. Daley staff will have play and sports equipment available for student outdoor activities. We are confident that our students can find creative ways to be active and have fun.

For more information about the Nanton Schools Project, visit [www.lrsd.ca/nantonsolution](http://www.lrsd.ca/nantonsolution).